

HODDELL STOTESBURY MORGAN IS A CHARTERED SURVEYING
COMPANY PARTNERSHIP PROVIDING COMMERCIAL PROPERTY
INVESTMENT AND DEVELOPMENT ADVICE.



ABOUT US

Hoddell Stotesbury Morgan is a Partnership established in 2002, as a result of the merger of Hoddell Stotesbury and Morgan Loggie.

It specialises in commercial property investment and development advice on a national basis. The firm consists of three Partners who have over 85 years of experience in the property investment market.

It is our aim to offer a professional service with at least one Partner being involved in each project. From this personal and active approach we aim to understand our clients' needs and goals, producing a targeted response to suit each project or instruction.

As a result we have built up a core of clients who retain the Partnership on general property investment and development matters and specialist projects.

SERVICES OFFERED

The principal services offered by the Partnership are as follows:

- Sale of investment properties
- Acquisition of investment properties
- Development funding
- Asset Management analysis
- Investment project coordination
- Portfolio analysis

The ultimate aim of the practice is to maximise clients' assets and profit, this is achieved in the following ways:

SALES

We consistently maximise returns for our clients on their sales instructions. This is achieved via a marketing strategy that reflects the property to its best advantage combined with the targeting of active buyers through our comprehensive and continually updated database of investors. With our enthusiasm and pursuit of sales through to completion, we consistently achieve a high transactional success rate.

ACQUISITIONS

On acquisitions we employ our market knowledge to improve stock selection and use our in depth analysis to obtain a full understanding of the investment. This is undertaken with total integrity and attention to detail. To improve our clients' success rate we aim to source off market investments and utilise our recognised position in the UK market to obtain details on those that may only have been given a limited marketing.

EXISTING OWNERSHIPS

We are retained by clients to maximise returns from existing properties and portfolios. Through our hands on involvement which results in a detailed knowledge of the asset, we are able to produce creative ideas to maximise returns.

DEVELOPMENT

We have considerable experience in the negotiation of forward funding packages for both institutional investor and developer clients, over a broad range of commercial schemes.



PEOPLE

RICHARD HARDING MRICS

Richard graduated from Reading University in 1985 and spent three years at Hillier Parker involved in retail agency. He then joined Clive Lewis & Partners where he specialised in investment agency and joined Morgan Loggie in 1995 where he soon became a Partner and continues to be in the merged Practice. He remains active in the investment market and has a strong involvement in the car showroom and retail sectors.

TIM MORGAN FRICS

Tim started in the profession in 1975 at Edwards Bigwood & Bewley in Birmingham. After completing the Estate Management course at Reading University in 1979, he joined Jones Lang Wootton where he specialised in investment acquisitions, disposals and development funding. In 1985 he left and set up his own Practice, Blanchflower Morgan, from which Morgan Loggie evolved in 1992. Morgan Loggie merged with Hoddell Stotesbury to form the current Practice of Hoddell Stotesbury Morgan in 2002.

PAUL YEADON FRICS

Paul graduated from Reading University in 1979 and joined Richard Ellis where he specialised in investment agency and development funding. After three years he moved to Lalonde Bros & Parham before joining Clifford Bonney in 1984. He joined Hoddell Stotesbury in 1992 where he became a Partner and is one of the founding Partners of Hoddell Stotesbury Morgan. He is active in the investment market but retains a strong bias towards development funding.

ASSOCIATE PARTNERS

ANDREW TAYLOR MRICS

Andrew graduated from Southbank University in 1996. He joined Glenny where he undertook a range of agency and professional work. Andrew moved to Slade & Co in 2002 where he specialised in investment agency. He joined Hoddell Stotesbury Morgan in 2004 and continues advising on investment acquisitions and disposals.

BROOK STOTESBURY BSc

Brook graduated from the University of the West of England in 2004 with a degree in Real Estate Valuation Management. He then joined Kenningtons where he worked as a Central London Office Agent and Development Consultant. Brook joined Hoddell Stotesbury Morgan in 2006 where he continues to have a strong involvement in Central London and South East office investment sectors.

CONSULTANTS

PETER STRATTON MBA

Peter started his career with Cluttons in 1969 followed by Hillier Parker and eventually joining Hoddell Stotesbury in 1984, where he soon became a Partner. He is now a Consultant with Hoddell Stotesbury Morgan and is involved in several major development projects.

MICHAEL STOTESBURY

After qualifying at Gerald Eve & Co in 1966, Michael joined the Investment Department of Richard Ellis where he became an Associate Partner. In 1974 he left to join the Partnership of Anthony Lipton & Co and then in 1982 he set up Hoddell Stotesbury. He became a Consultant with Hoddell Stotesbury Morgan after the merger in 2002.

SUPPORT

CAROLE MURPHY

Carole joined Hoddell Stotesbury Morgan in June 2008 and brings with her over 18 years secretarial and reception experience in the property sector. In her spare time she enjoys watching football, listening to music and is currently learning Spanish language.



1



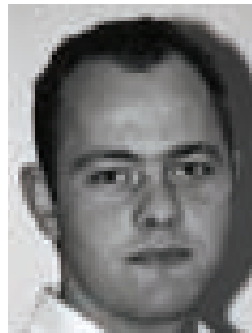
2



3



4



5



6



7



8

CLIENTS

Our major clients include:

- Aberdeen Property Investors
- Alliance Trust
- Aviva Investors
- BlackRock Investment Management
- CB Richard Ellis Investors
- Canada Life Limited
- Credit Suisse Asset Management
- Easter Group Ltd
- Galliard Homes
- Greater Manchester Pension Fund
- Hostmead Developments Ltd
- LaSalle Investment Management
- Legal & General Assurance Society Ltd
- NFU Mutual Insurance Society Ltd
- Pendragon plc
- Resolution Asset Management
- Rockspring Property Investment Managers Ltd
- Salmon Harvester Properties Ltd
- Standard Life Investment Funds Ltd
- Sytner Group Ltd

CONTACT US

Hoddell Stotesbury Morgan

Telephone

020 7629 2030

Fax

020 7629 2040

Address

115 Mount Street
London
W1K 3NQ

